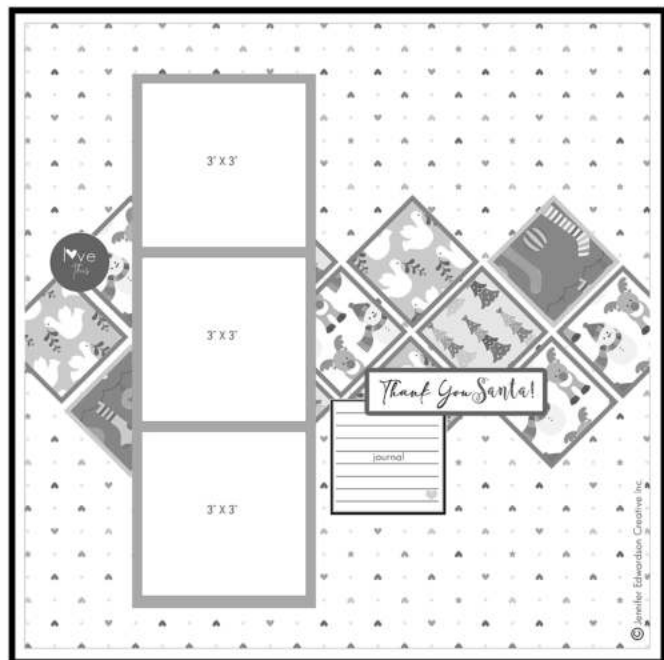


# Layout #26 - November 2020



## Supplies Required:

- (1) 12x12" CS for base (you will only see 1/4" of this around the edge of your base)
- (1) 12x12" CS (i used a dotted swiss CS but you could use a tiny pattern or tone on tone pattern. Something that doesn't compete with your diamond shaped patterns)
- (5-8) PP min. 2x2" in size. You will be creating min. (13) pieces
- (1) 12x12" CS to mat these PP
- (1) CS min. 4x12"; This will be used to create one long mat for your photos
- PHOTOS: (3) 3x3"
- Alphas and Embellishments

Notes: \_\_\_\_\_

\_\_\_\_\_

\_\_\_\_\_

\_\_\_\_\_

## Instructions:

- (1) 12x12" CS base
- Cut (1) 12x12" CS (or small pattern tone on tone) to 11 1/2x11 1/2"; Adhere centred on base
- Cut (13) 1 3/4 x 1 3/4" mats (mine are creme)
- Cut (13) 1 1/2 x 1 1/2" PP pieces; Adhere these on top of each mat
- Start at the right edge, centre, and adhere (1) in a diamond shape
- Add another on top, then bottom, move up adding 2 more for a row of 3 and so on back down to one in the centre at the left edge as shown
- Cut (1) photo mat to 3 1/2 x 9 3/4"; Raise centred top to bottom approx. 1 1/2" in from left edge of base
- Add (3) 3x3" photos onto mat
- Title and Embellish as desired