

New Home Card Set by Katelyn

Hey Friends! I'm Up on the blog today sharing a tutorial on how to make these vintage inspired New Home Cards. To create this card set, I've used the Live Simply Creative Kit, the Live Simply Add On Kit and the Live Simply Cut File. Grab a cup of your favourite summertime beverage and enjoy my tutorial on how to create my New Home Card set.



katelyn grosart



Jennifer & Edwardson
creative team



shopjenniferedwardson.com

We will start by creating the Welcome Home Card.



katelyn grosart



Jennifer Edwardson
creative team



shopjenniferedwardson.com

To start, you'll need the 6x8 Paper Pad out of the Live Simply Add On Kit. From the paper pad, you'll need the black chicken wire, pink floral and blue gingham papers. Cut a piece out of the blue gingham paper that measures 1" x 4". Cut a piece out of the black chicken wire paper that measures 4" x 5 1/4". Cut a piece out of the pink floral paper that measures 3 1/2" x 3 3/4". Distress the edges of all three papers.



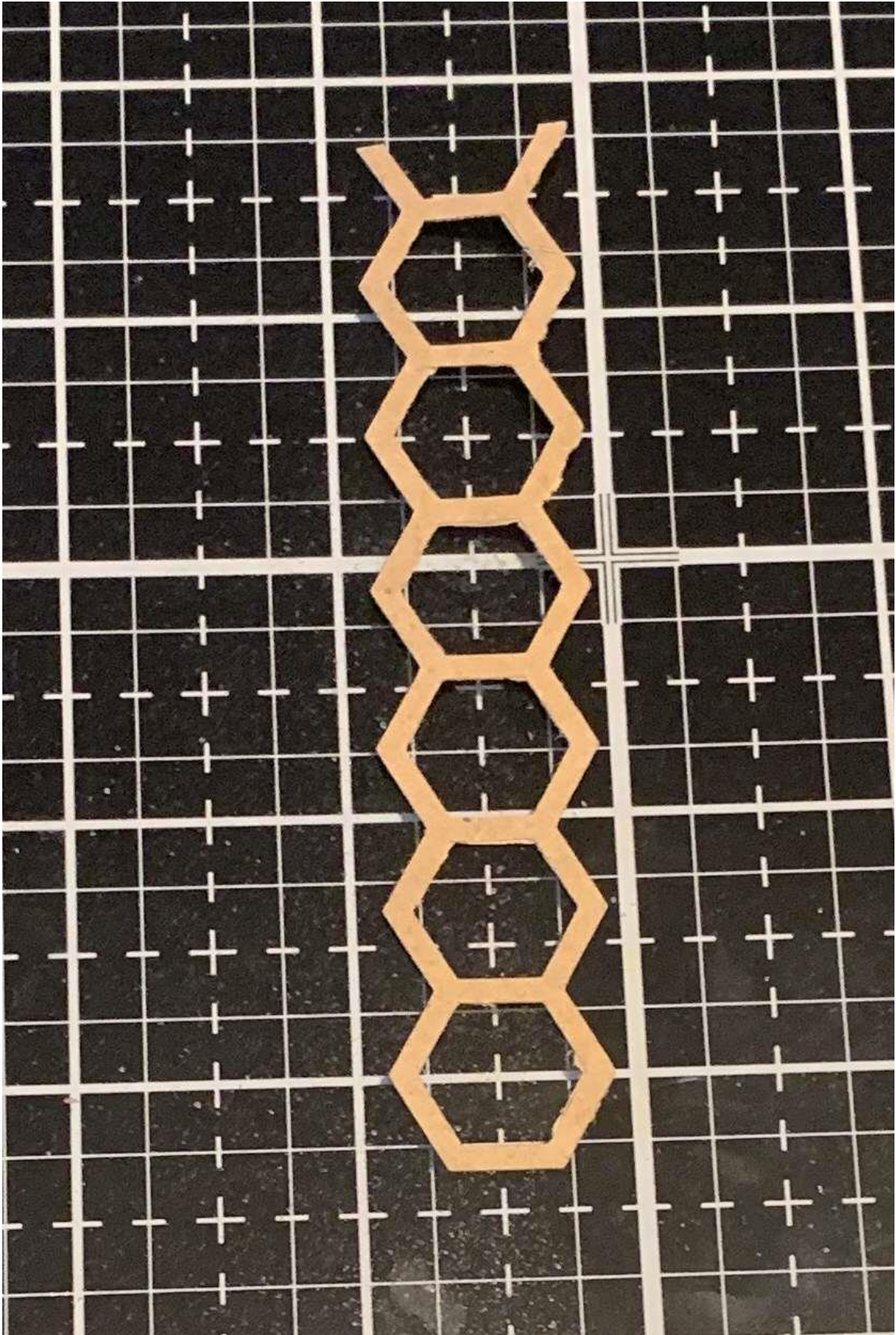
From the 3x4 Card Paper, you'll need the Welcome Home card as well as one of the other cards. Cut the Welcome Home card down to 2 7/8" x 3 7/8". Flip the other card over and make sure that it measures 3" x 4". Distress the edges of both papers.



From the coordinating lightly patterned plain papers out of the Live Simply Creative Kit, you'll need the light green and coral papers. Cut a piece out of the light green paper that measures $3\frac{3}{4}$ " x 5". Cut a piece out of the coral paper that measures 3" x 4". Distress the edges of both papers.



Cut out the Live Simply Cut File out of a piece of kraft Cardstock. You'll need the hexagon border piece. Cut a piece off the border that measures 4" long.



Cut a piece of lace that measures 4" long.



Adhere the light green paper to the black chicken wire paper. Adhere the pink floral paper to the light green paper.



Adhere the hexagon border to the middle of the blue gingham paper. Adhere the lace to the back side of the blue gingham paper. Adhere the blue gingham paper strip 1 1/8" from the bottom of the black chicken wire paper.



Foam square the other chicken wire piece on an angle on the pink floral paper as desired. Adhere the welcome home card to the coral paper. Adhere the coral paper to the chicken wire piece on an angle as desired.



Roll the edges on the chicken wire card and the coral paper as desired. From the Live Simply Add On Kit, you'll need two of the small decorative brads. Adhere the two brads to the top right corner of the pink floral paper.



To finish the card, cut a cardbase out of white cardstock that measures 5 ½" x 8 ½", score at 4 ¼". Adhere the cardfront to the cardbase.



Make sure to leave all of the kit contents out that you've already used as you will need some of the them for the next card.

Now we'll move on and create the Sweet Home Card.



katelyn grosart



Jennifer Edwardson
creative team

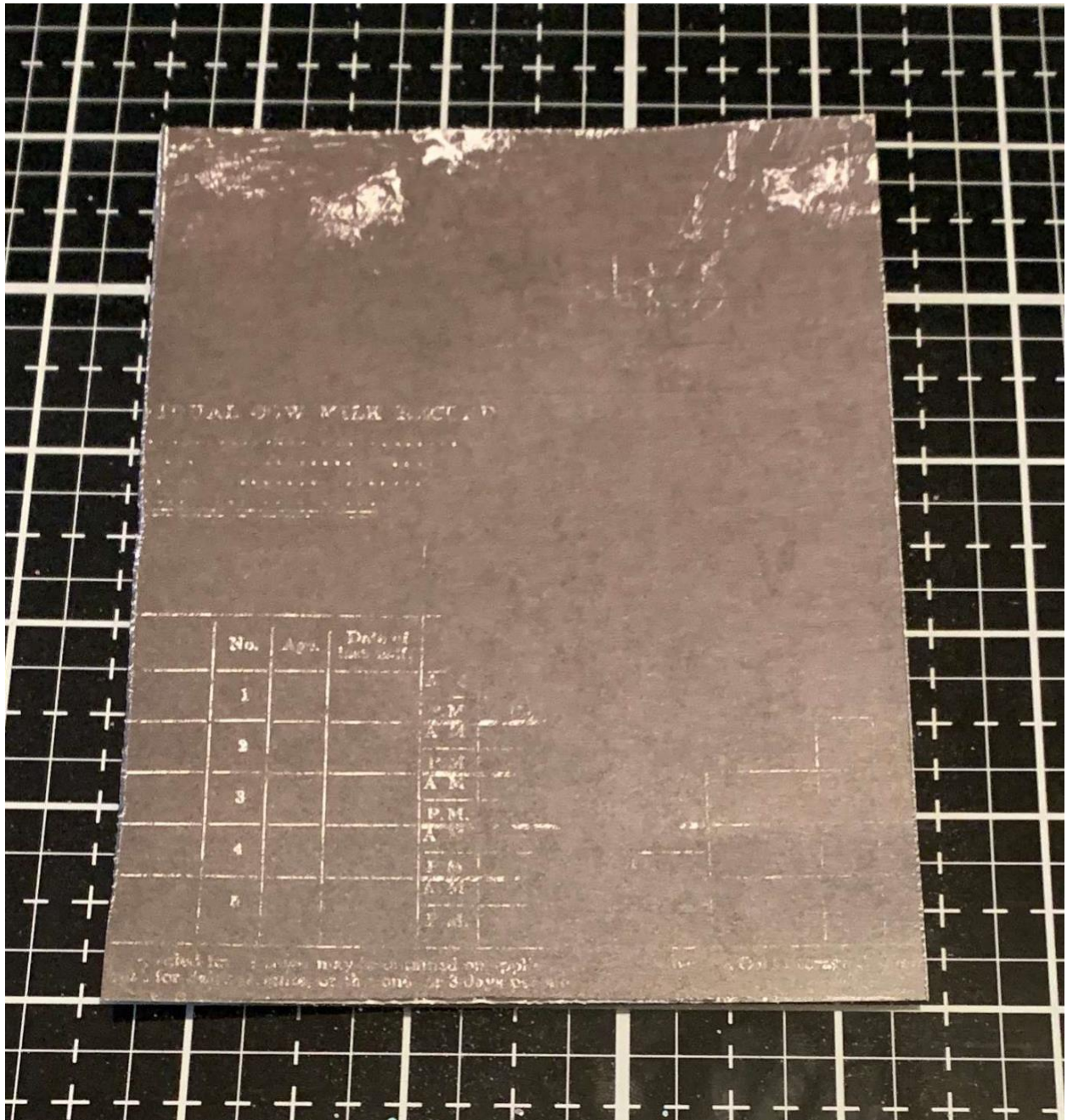


shopjenniferedwardson.com

From the 6x8 Paper Pad, out of the Live Simply Add On Kit, you'll need the blue flower paper. Cut a piece that measures 4" x 5 1/4". Distress the edges of the paper.



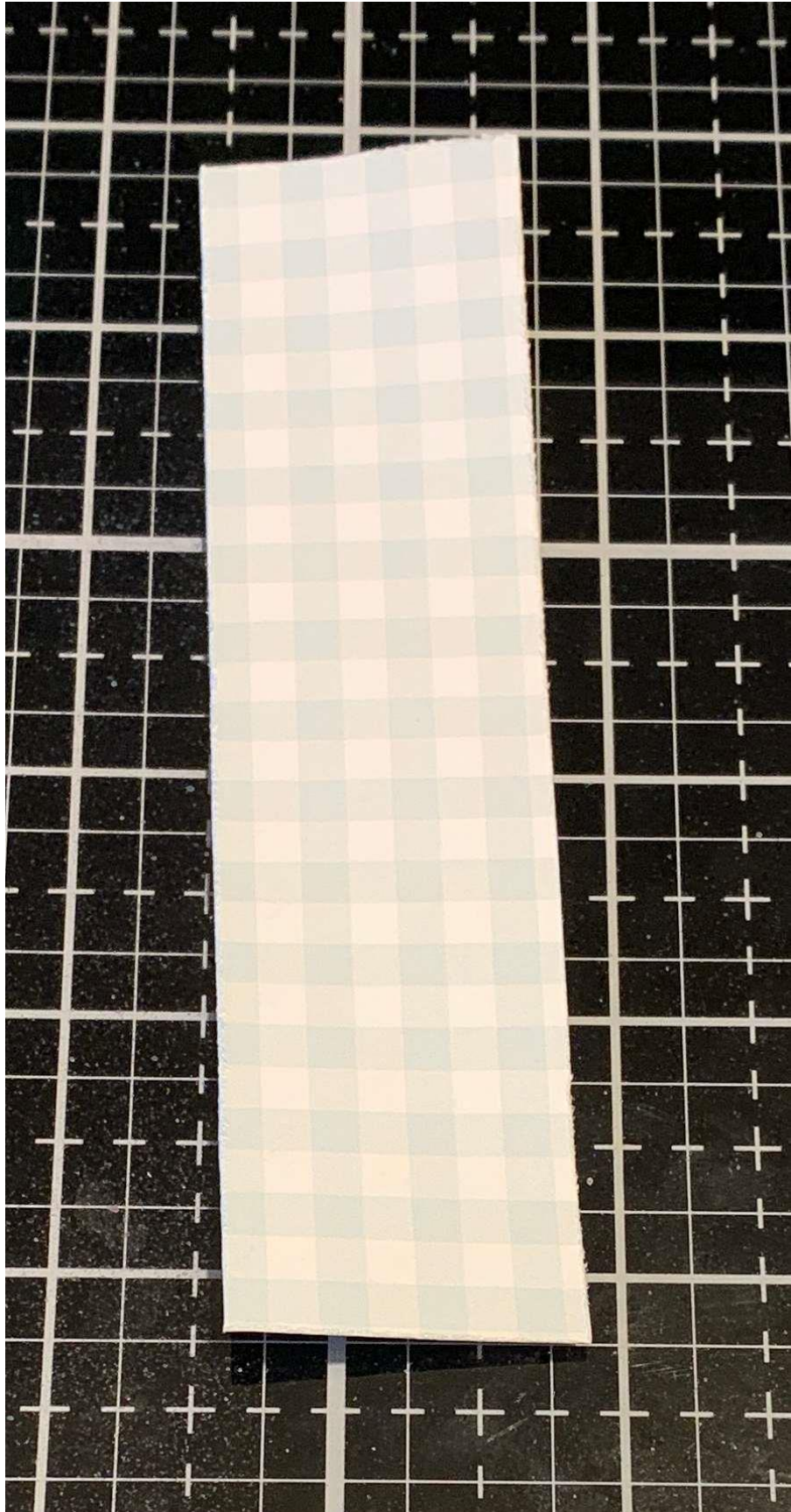
Cut a piece from the white/ black patterned paper that measures $3\frac{3}{4}$ " x 5". Distress the edges of the paper.



Cut a piece from the pink polka dot paper that measures $3\frac{1}{2}$ " x $4\frac{3}{4}$ ". Distress the edges of the paper.



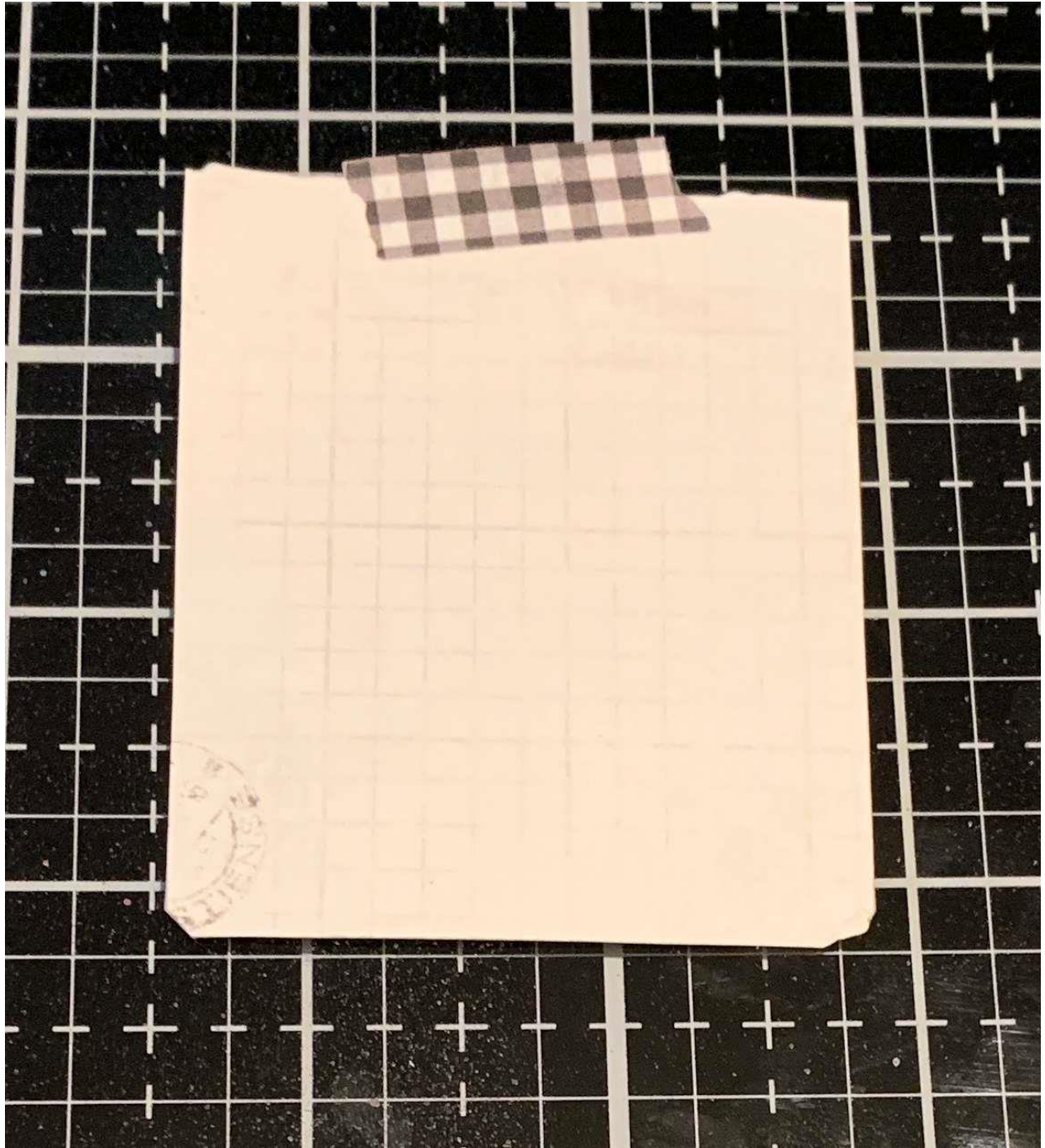
Cut a piece out of the blue gingham paper that measures $1\frac{1}{4}$ " x 5". Distress the edges of the paper.



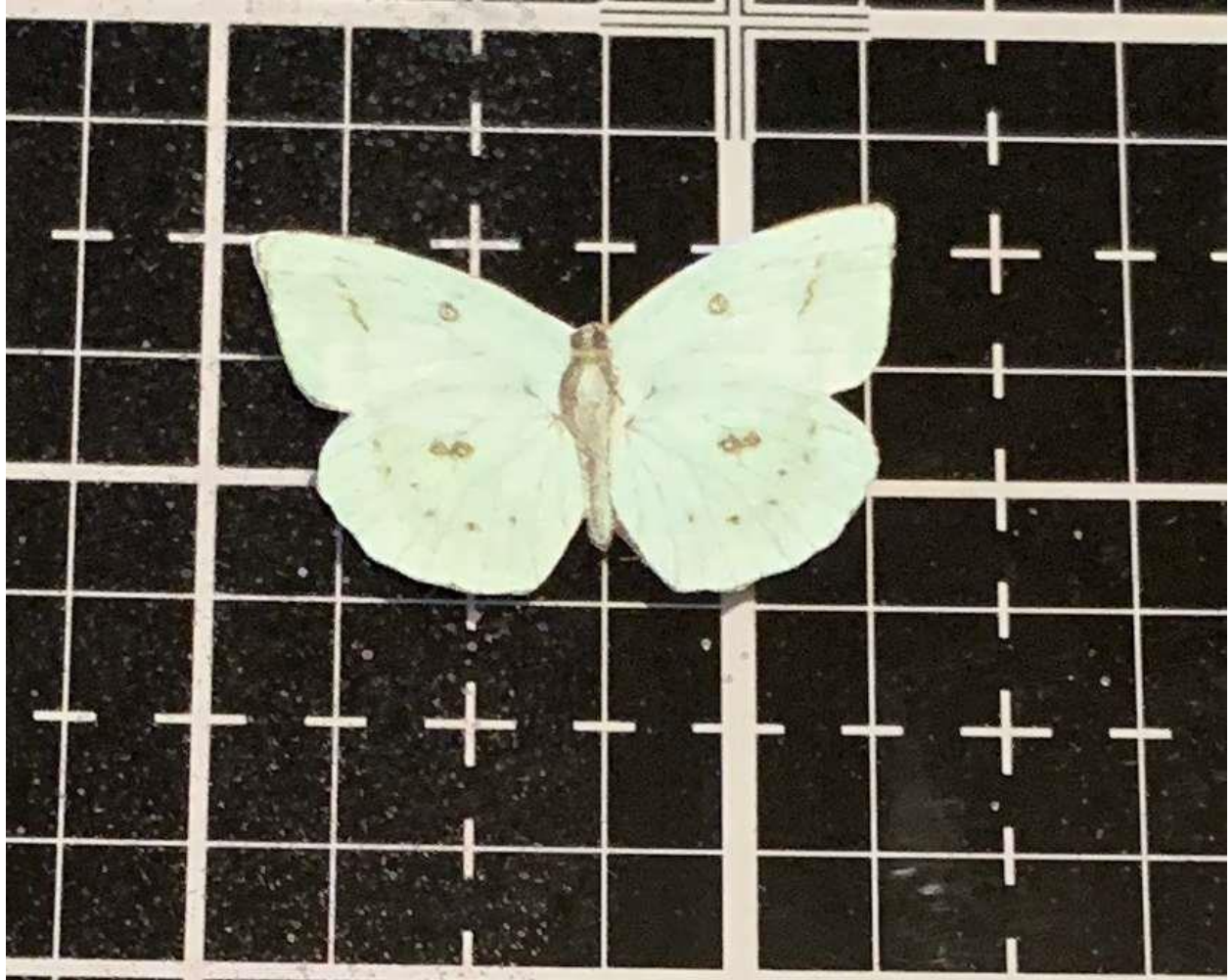
From the patterned paper that has the seed packet photos from the Live Simply Creative Kit, you'll need the Scott's Roses and another seed packet. Distress the edges of both pieces.



From the patterned paper that has the 3x4 Cards from the Live Simply Creative Kit, you'll need to fussy cut the note piece that has washi tape at the top. Distress the edges.



From the same piece of paper, you'll need to fussy cut one of the butterflies off of the card.



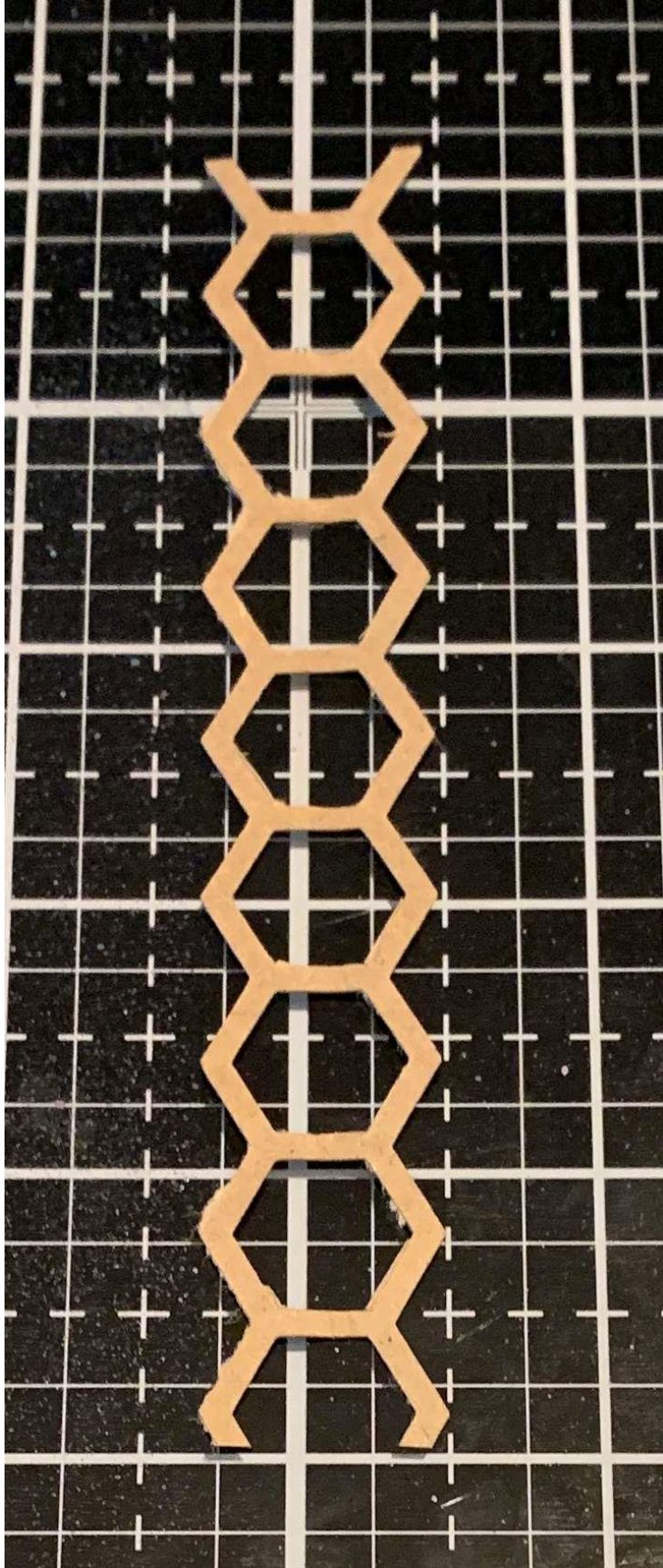
Out of the Ephemera Pack from the Live Simply Creative Kit, you'll need the Sweet Home, the Sweet ticket, a heart and the pea image.



Out of the Page Pieces Pack from the Live Simply Creative Kit, you'll need the florals with ticket and a heart. Fussy cut the heart out.



From the remaining hexagon border from the Live Simply Cut File, cut a piece that measures 5 ¼".



Cut a piece of lace that measures 5 ¼”.



Adhere the black/white patterned paper to the blue floral patterned paper. Adhere the pink polka dot paper to the black/white patterned paper.



Adhere the hexagon border to the middle of the blue gingham paper. Adhere the lace to the back side of the blue gingham paper. Adhere the blue gingham paper strip $\frac{3}{4}$ " from the left of the pink polka dot paper.



Use adhesive and foam squares to adhere the backside of the other seed packet $\frac{1}{8}$ " from the left and $\frac{3}{8}$ " from the top of the pink polka dot paper. Adhere the ticket $\frac{7}{8}$ " from the bottom and making sure $\frac{5}{8}$ " hangs over on the right hand side of the Scott's Roses Seed Packet. Use adhesive and foam squares to adhere the Scott's Roses seed packet $\frac{1}{2}$ " from the top and $\frac{1}{4}$ " from the right of the pink polka dot paper.



Adhere the pea image $\frac{1}{2}$ " from the bottom and making sure $\frac{5}{8}$ " hangs over on the right hand side of the note piece. Foam square the note piece $\frac{1}{2}$ " from the right and $\frac{7}{8}$ " from the top of the pink polka dot paper. Adhere the sweet home sentiment to right hand side of the note piece as desired.



Adhere the floral with label image to the bottom left side of the note piece as desired. Adhere the fussy cut butterfly underneath the S on the Sweet Home Sentiment. Shape wings as desired.



Adhere the two hearts as desired underneath the H and O as desired.



To finish the card, cut a cardbase out of white cardstock that measures $5\frac{1}{2}$ " x $8\frac{1}{2}$ ", score at $4\frac{1}{4}$ ". Adhere the cardfront to the cardbase.



Here is the finished New Home Card Set.



katelyn grosart



Jennifer Edwardson
creative team



shopjenniferedwardson.com

Jennifer Edwardson Creative Inc. Supplies Used:

- Live Simply Creative Kit
- Live Simply Add On Kit
- Live Simply Cut File
- AC Cardstock – White
- 3MM 1/8" Be Creative Tape
- AC Sticky Thumb 3D Foam – Circles

- Art Glitter Glue

Thanks so much for joining me today and I hope I've inspired you to recreate my New Home Card Set at home.

- Katelyn